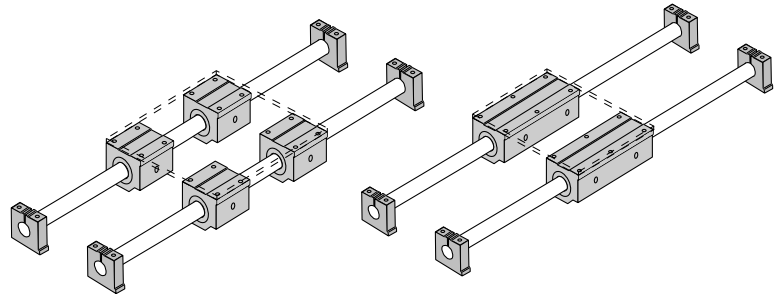


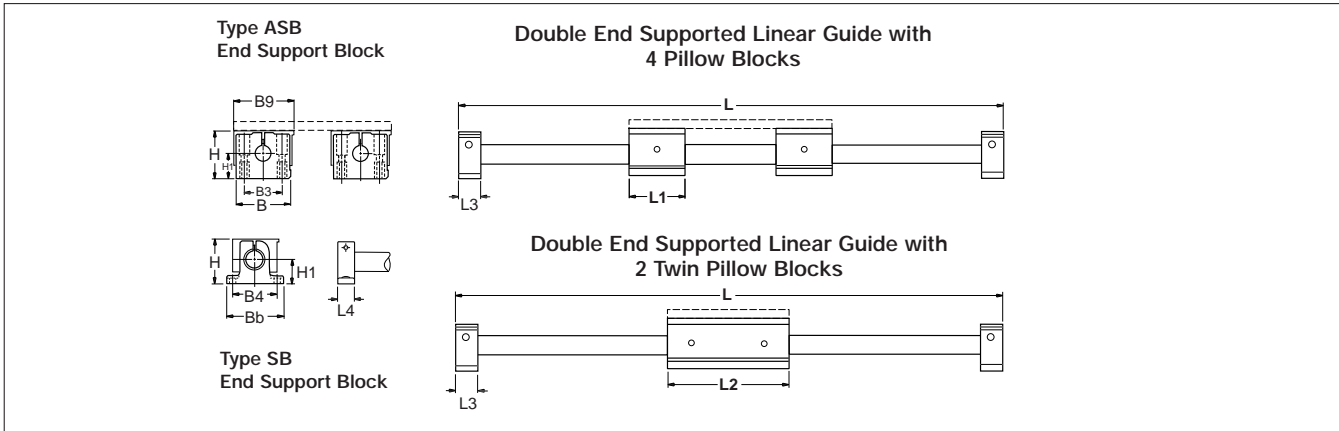
End Support 1NB

Linear Guide #9

End Supported,
Industry Standard Dimension



METRIC



End Support Linear Guide 1NB with 4 Pillow Blocks (Dimensions in mm)

Part Number		Nom. Dia.	L1	L3	L4	H	H1	B	Bb	B9	Pillow Block	Shaft Support	
W/ Type ASB Shaft Supports	W/ Type SB Shaft Supports											Type ASB	Type SB
1NB-M08-NMO	1NB-M08-NNO	8	32	18	10	30	15	32	32	35	SPPB-M08-XS	ASB-M08-XS	SB-M08-XS
1NB-M12-NMO	1NB-M12-NNO	12	39	20	12	38	20	43	42	43	SSEPBM12-XS	ASB-M12-XS	SB-M12-XS
1NB-M16-NMO	1NB-M16-NNO	16	43	24	16	47	25	53	50	53	SSEPBM16-XS	ASB-M16-XS	SB-M16-XS
1NB-M20-NMO	1NB-M20-NNO	20	54	30	20	55	30	60	60	60	SSEPBM20-XS	ASB-M20-XS	SB-M20-XS
1NB-M25-NMO	1NB-M25-NNO	25	67	38	25	65	35	78	74	78	SSEPBM25-XS	ASB-M25-XS	SB-M25-XS
1NB-M30-NMO	1NB-M30-NNO	30	79	40	28	75	40	87	84	87	SSEPBM30-XS	ASB-M30-XS	SB-M30-XS
1NB-M40-NMO	1NB-M40-NNO	40	91	48	32	95	50	108	108	108	SSEPBM40-XS	ASB-M40-XS	SB-M40-XS

End Support Linear Guide 1NB with 2 Twin Pillow Blocks (Dimensions in mm)

Part Number		Nom. Dia.	L2	L3	L4	H	H1	B	Bb	B9	Pillow Block	Shaft Support	
W/ Type ASB Shaft Supports	W/ Type SB Shaft Supports											Type ASB	Type SB
1NB-M08-PMO	1NB-M08-PNO	8	62	18	10	30	15	32	32	35	SPTWN-M08-XS	ASB-M08-XS	SB-M08-XS
1NB-M12-PMO	1NB-M12-PNO	12	76	20	12	38	20	43	42	43	SSETWN-M12-XS	ASB-M12-XS	SB-M12-XS
1NB-M16-PMO	1NB-M16-PNO	16	84	24	16	47	25	53	50	53	SSETWN-M16-XS	ASB-M16-XS	SB-M16-XS
1NB-M20-PMO	1NB-M20-PNO	20	104	30	20	55	30	60	60	60	SSETWN-M20-XS	ASB-M20-XS	SB-M20-XS
1NB-M25-PMO	1NB-M25-PNO	25	130	38	25	65	35	78	74	78	SSETWN-M25-XS	ASB-M25-XS	SB-M25-XS
1NB-M30-PMO	1NB-M30-PNO	30	152	40	28	75	40	87	84	87	SSETWN-M30-XS	ASB-M30-XS	SB-M30-XS
1NB-M40-PMO	1NB-M40-PNO	40	176	48	32	95	50	108	108	108	SSETWN-M40-XS	ASB-M40-XS	SB-M40-XS

Shaft Deflection Note:

Load limit may be below the dynamic load rating due to shaft deflection. Bearings can accommodate up to 1/2° deflection. See Engineering Section (pg 204) for Deflection calculations.

End Support Linear Guide

1NB Benefits:

- Requires only one part number to specify entire linear guide.
- Available with 60 Case* LinearRace* shaft end support blocks in either light weight aluminum or rigid iron materials.
- Used in end supported applications when spanning or bridging a gap.

End Support Linear Guide

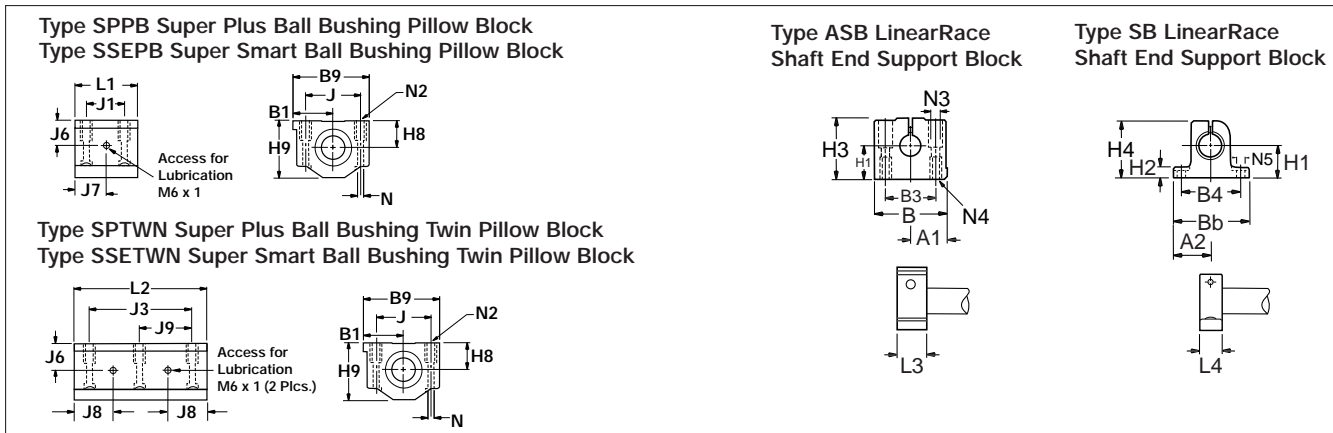
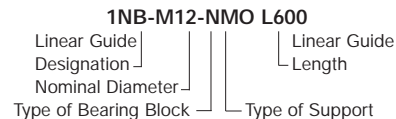
1NB Components: †

- 4 Super Smart Ball Bushing* pillow blocks or 2 Super Smart Ball Bushing twin pillow blocks.
- 2 60 Case LinearRace shafts.

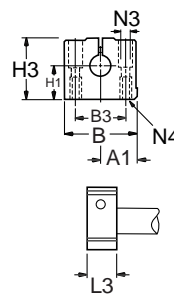
Specifying a Thomson Linear guide:

1. Determine the proper system for your load and life requirements.
2. Select the part number.
3. Add the letter "L" followed by the overall length in millimeters, as a suffix to the part number.

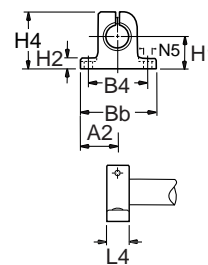
Part Numbering System



Type ASB LinearRace Shaft End Support Block



Type SB LinearRace Shaft End Support Block



Type SPPB and SSEPB Pillow Blocks (Dimensions in mm)													Type SPTWN and SSETWN Pillow Blocks							
Part Number	Nom. Dia.	L1	H8	H9	B1	B9	J	J1	J6	J7	N Dia.	N2	Mass kg	Part Number	Nom. Dia.	L2	J3	J8	J9	Mass kg
SPPB-M08-XS	8	32	15	28	17,5	35	25	20	15	19,5	3,3	M4	0,07	SPTWN-M08-XS	8	62	50	19,5	25	0,15
SSEPB-M12-XS	12	39	18	35	21,5	43	32	23	18	23,0	4,3	M5	0,13	SSETWN-M12-XS	12	76	56	23,0	28	0,27
SSEPB-M16-XS	16	43	22	42	26,5	53	40	26	22	25,0	5,3	M6	0,20	SSETWN-M16-XS	16	84	64	25,0	32	0,41
SSEPB-M20-XS	20	54	25	50	30,0	60	45	32	25	30,5	6,6	M8	0,35	SSETWN-M20-XS	20	104	76	30,5	38	0,73
SSEPB-M25-XS	25	67	30	60	39,0	78	60	40	30	37,0	8,4	M10	0,66	SSETWN-M25-XS	25	130	94	37,0	47	1,37
SSEPB-M30-XS	30	79	35	70	43,5	87	68	45	35	43,0	8,4	M10	0,99	SSETWN-M30-XS	30	152	106	43,0	53	2,04
SSEPB-M40-XS	40	91	45	90	54,0	108	86	58	45	49,0	10,5	M12	1,83	SSETWN-M40-XS	40	176	124	49,0	62	3,73

Housing Material: Aluminum Alloy Grey Anodized

Housing Material: Aluminum Alloy Grey Anodized

Type ASB LinearRace Shaft End Support Block											Type SB LinearRace Shaft End Support Block										
Part Number	Nom. Dia.	A1	B	B3	H1	H3	L3	N3 Dia.	N4	Mass kg	Part Number	Nom. Dia.	A2	B4	Bb	H1	H2	H4	L4	N5 Dia.	Mass kg
ASB-M08-XS	8	16,0	32	22	15	28	18	3,5	M4	0,04	SB-M08-XS	8	16	25	32	15	5,2	27	10	4,5	0,03
ASB-M12-XS	12	21,5	43	30	20	36	20	5,3	M6	0,10	SB-M12-XS	12	21	32	42	20	5,5	35	12	5,5	0,06
ASB-M16-XS	16	26,5	53	38	25	43	24	6,6	M8	0,15	SB-M16-XS	16	25	40	50	25	6,5	42	16	5,5	0,11
ASB-M20-XS	20	30,0	60	42	30	51	30	8,4	M10	0,23	SB-M20-XS	20	30	45	60	30	8,0	50	20	5,5	0,21
ASB-M25-XS	25	39,0	78	56	35	61	38	10,5	M12	0,41	SB-M25-XS	25	37	60	74	35	9,0	58	25	6,6	0,35
ASB-M30-XS	30	43,5	87	64	40	71	40	10,5	M12	0,53	SB-M30-XS	30	42	68	84	40	10,0	68	28	9,0	0,52
ASB-M40-XS	40	54,0	108	82	50	88	48	13,5	M16	0,99	SB-M40-XS	40	54	86	108	50	12,0	86	32	11,0	0,92

End Support Material: Aluminum Alloy Grey Anodized

End Support Material: Iron

Dynamic Load Capacity Matrix (100 km travel)					Dynamic Load Capacity Matrix (100 km travel)				
Linear Guide Assembly Part No.	Dynamic Load Capacity (N) (Even Distribution)	Pillow Block Part No.	Pillow Block Dynamic Load Capacity (N)		Linear Guide Assembly Part No.	Dynamic Load Capacity (N) (Even Distribution)	Pillow Block Part No.	Pillow Block Dynamic Load Capacity (N)	
1NB-M08-NMO	1240	SPPB-M08-XS	310		1NB-M08-PMO	1000	SPTWN-M08-XS	500	
1NB-M12-NMO	2600	SSEPB-M12-XS	650		1NB-M12-PMO	2120	SSETWN-M12-XS	1060	
1NB-M16-NMO	8800	SSEPB-M16-XS	2200		1NB-M16-PMO	8800	SSETWN-M16-XS	4400	
1NB-M20-NMO	16000	SSEPB-M20-XS	4000		1NB-M20-PMO	16000	SSETWN-M20-XS	8000	
1NB-M25-NMO	26800	SSEPB-M25-XS	6700		1NB-M25-PMO	26800	SSETWN-M25-XS	13400	
1NB-M30-NMO	33200	SSEPB-M30-XS	8300		1NB-M30-PMO	33200	SSETWN-M30-XS	16600	
1NB-M40-NMO	54800	SSEPB-M40-XS	13700		1NB-M40-PMO	54800	SSETWN-M40-XS	27400	

† Super Plus Ball Bushing* bearings are used in 8 mm size pillow blocks.